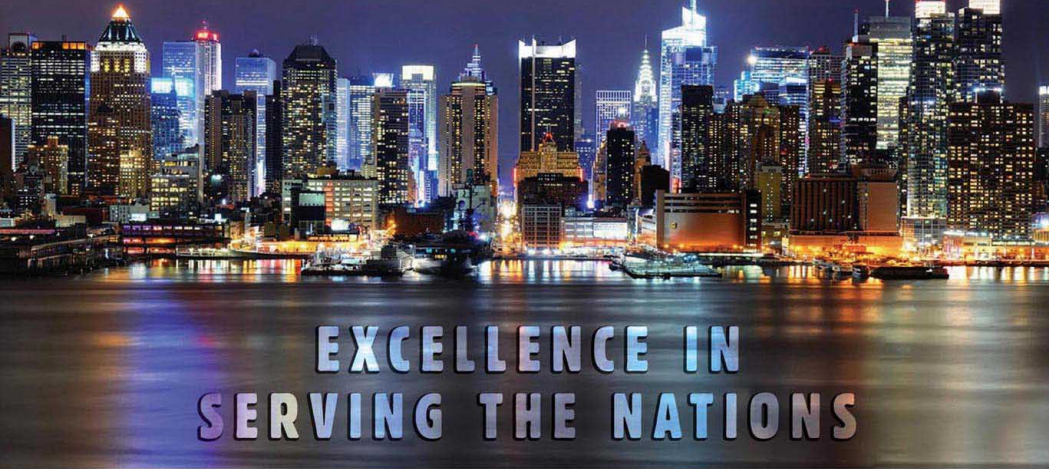


**3 DECADES**  
nearing  
of Excellence



**PETE - Hammond**  
Transformative Synergy



**DRY TYPE CAST RESIN & VPI TRANSFORMERS**  
upto 20 MVA / 33 / 22 / 11 KV

AN ISO 9001: 2008 COMPANY

Keeping in view, the present demand in the industry for safety, maintenance and aesthetics of the transformer, PETE has started manufacturing of Vacuum Resin impregnated Dry Type Transformers since 1991. Performance of these Transformers is proved to be quite satisfactory.

To improve the reliability and longevity of Dry Type transformers, we have developed Cast Resin Dry Type transformers and started manufacturing since 2007.

Now we are geared up with all infrastructure facilities for the manufacture of Cast Resin Dry Type transformers with new concepts such as Unitised Sub stations (USS) / Package Sub Stations (PSS) and supplied various ratings.

<b>Rating</b>	25 KVA to 20 MVA
<b>HV Voltages</b>	3.3, 6.6, 11, 22, 33 KV
<b>LV Voltages</b>	Upto 1.1 KV
<b>Winding Material</b>	Electrolytic Copper
<b>Connections</b>	HV : Delta, LV : Star With Neutral (or) as per requirement
<b>Switch</b>	Off circuit Tap Links / On Load Tap Changer
<b>Insulation Class</b>	Classes "F" & "H"
<b>Applicable Standards</b>	IS : 11171 / IEC : 60276
<b>Enclosure</b>	IP 21 to IP 33 for indoor & IP 43 for Outdoor applications
<b>Termination</b>	HV : Cable Box LV : Cable Box / Bus Duct

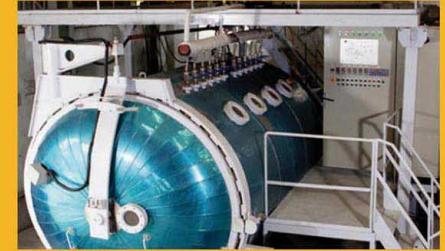
**APPLICATION AREAS:**

1. Airports
2. Hospitals
3. Commercial Shopping Complexes
4. Theatres / Multiplexes
5. Subways / Underground Tunnels
6. Schools & Colleges
7. Steel, Cement, Textile & Chemical Industries
8. Pumping Stations
9. Metro Railways, Ports

**DRY TYPE  
PRODUCTION FACILITIES**



**FOIL WINDING MACHINE**



**ULTRA VACUUM FILLING OVEN**

**ADVANTAGES:**

1. Maintenance Free :
3. Aesthetics : Comparitively Superior.
4. Non Inflammable : No Fire Hazard.
5. Non Polluting : Hence Eco Friendly
6. Non Hygroscopic : No effects of moisture
7. High Short Circuit strength
8. Compact Design
9. Partial Discharge Free
10. Ready to install



**PETE - Hammond**  
Transformative Synergy

■ BENGALURU ■ CHENNAI ■ COIMBATORE  
■ MUMBAI ■ PUNE ■ DELHI

**CORPORATE OFFICE**

D. No: 8-3-166 / 6 & 7, G-9 to 11, Bhavya's Sree Arcade,  
Erragadda, Hyderabad - 500 018, Telangana. INDIA.  
Tel : +91-40-23813593 / 23812291, 97000 41818

**WORKS**

Plot No.6A, I.D.A, Phase-1, Pashammairam,  
Patancheru (M), Medak (Dist) - 502 307, Telangana. INDIA.

**E-Mail** : [marketing@petetransformers.com](mailto:marketing@petetransformers.com)  
**Web** : [www.petetransformers.com](http://www.petetransformers.com)